

Osiris Release Notes (Atlas2 Plus, Atlas, Mercury, and Software)

Version 1.1.138-3607

NEW FEATURES:

- ComBricks network names: Adapted on Osiris webserver and PDF report the Combricks Custom networks names:

Network Measurements

#	Network	Baudrate	Protocol Status	Masters	Slaves	Re
1	Its Working!	1.5Mbps	Unknown	2	16	Ur
2	Filling	No baudrate	Unknown	0	0	Ur
3	Quality check	No baudrate	Unknown	0	0	Ur
4	Packaging	No baudrate	Unknown	0	0	Ur

- Link list has been added to the report:

Generate report 🔗 ✕

< **General** Customize Topology Logo >

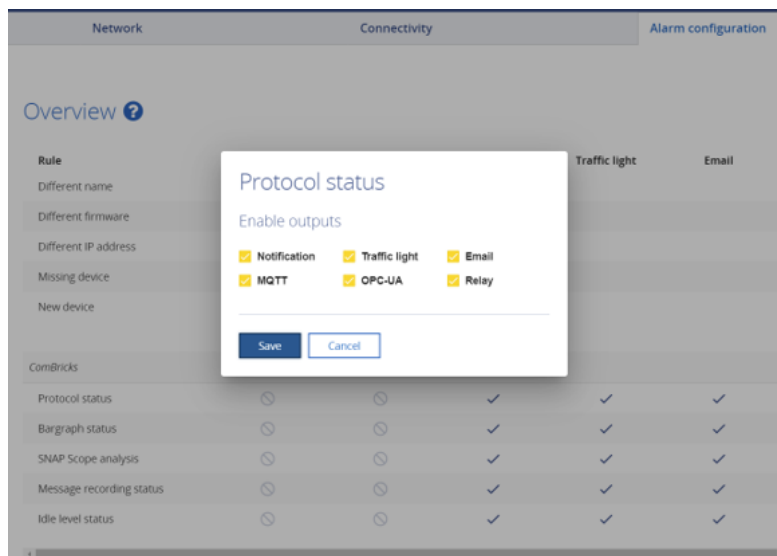
Report sections

Section	Include in report
Basic Info	<input type="checkbox"/>
Q-Factor	<input type="checkbox"/>
Device List	<input type="checkbox"/>
Link List	<input checked="" type="checkbox"/>
Traffic Light	<input type="checkbox"/>
ComBricks Overview	<input type="checkbox"/>
EtherTAP Analysis	<input type="checkbox"/>
Security report	<input type="checkbox"/>

Cancel Generate report

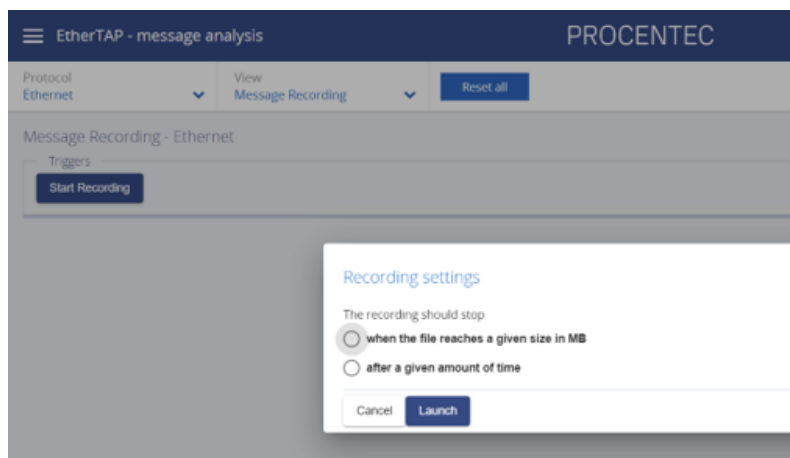
Link List in the report

- **ComBricks - Alarm Configuration:** Implemented new rules in the Alarm configuration for Combricks, possible to see the warning and errors in the Osiris outputs (Traffic Light, Notification, Email, MQTT, OPCUA):
 - Protocol status: There is a new Protocol problem detected.
 - Bargraph status: There is a new Bargraph problem detected.
 - SNAP Scope analysis: There is a new SNAP Scope problem detected.
 - Message recording status: There is a new Message recording problem detected.
 - Idle level status: There is a new Idle level problem detected.



New combricks rules in the Alarm configuration

- Implemented OPC-UA objects for ComBricks Statistics.
- Implemented OPC-UA objects for ComBricks Bar Graph.
- EtherTAP Manual Trigger has been added: This allows the user to manually trigger the recording of industrial ethernet messages, not just when an alarm occurs, but their choice for total memory size from 0.5 MB to 25 MB, or time from 30 seconds to 5 minutes.



EtherTAP Manual Trigger

- Alarm High Port Load: The User access the Alarm Configuration menu in Osiris, under the active analysis section, he can set in a new line a warning if any network loads get above the desired set point. With the alarm being pushed to the checked location within the System.

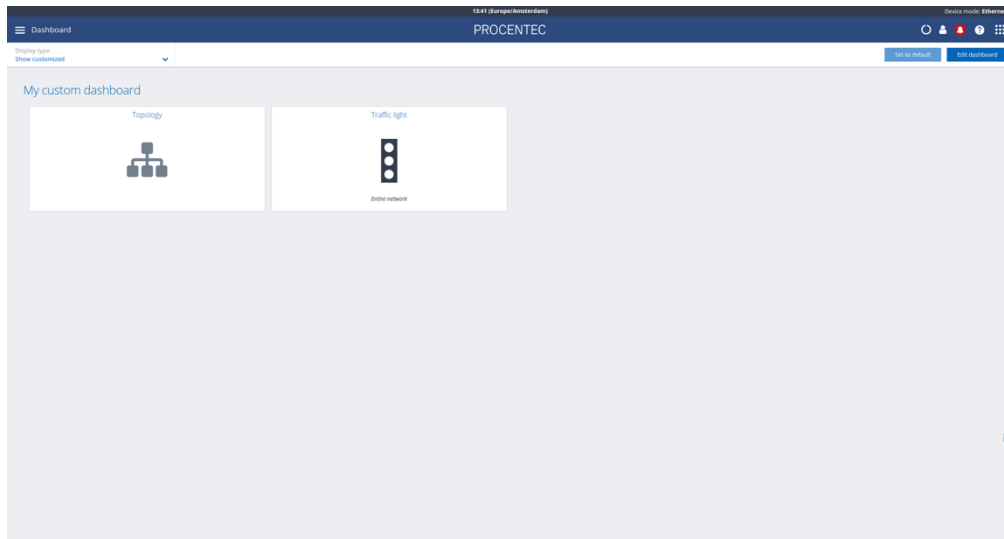
- New profile Log into Osiris: Creating a log of what profile logged into the atlas unit, when (date and time), if they changed items in the settings, alarms, ignore a device, or firmware. This log will be in the settings system menu, can be exported via .csv.

The screenshot shows the PROCENTEC settings interface. The 'System' menu is active, displaying options for 'Enable USB Ports', 'Enable Passive Analysis Only', and 'User Log'. Below the menu is a table of user logs.

Date	Time	Admin	Action	Field	Value	Other
12/22	2:31 PM	admin	login			
12/22	9:07 AM	admin	login			
12/22	2:28 PM	admin	login			
12/22	1:41 PM	admin	login			
12/22	1:40 PM	engineer	login			
12/22	1:39 PM	admin	valueChanged	settings.system.usbHubEnabled	false	true
12/22	1:39 PM	admin	valueChanged	settings.system.passiveOnlyEnabled	false	true
12/22	1:39 PM	admin	valueChanged	settings.system.usbHubEnabled	false	true
12/22	1:39 PM	admin	valueChanged	settings.system.passiveOnlyEnabled	true	false
12/22	1:36 PM	admin	valueChanged	settings.generalInfo.networkLocation	abcd	Office
12/22	1:36 PM	admin	valueChanged	settings.generalInfo.networkName	19212345	123456
12/22	1:33 PM	admin	valueChanged	settings.system.usbHubEnabled	false	true
12/22	1:33 PM	admin	valueChanged	settings.system.passiveOnlyEnabled	false	true

Log Users: Date time and the changes

- The Security Center port scan now also scans port 31421 and 19412. The results can now be exported to csv.
- Default Dashboard: In the Dashboard of Osiris is now possible to choose a default one, and every time that the users access Osiris, it will be loaded as default on any browser, or system or after clearing the cookies.



Default Dashboard: Option to customize

- SNAP IE: When setting a SNAP issue to resolved it is now possible to give feedback on what the final solution was. This feedback is stored locally but can optionally be send to the EI3 server.

The screenshot shows a modal dialog box titled "Please report the cause" overlaid on a software interface. The dialog contains the following elements:

- Title:** Please report the cause
- Cause *:** A dropdown menu with the selected value "No MRP Manager role set".
- Author *:** A text field containing "John Smith".
- Solution:** A text area containing "configure MRP manager".
- Send to SNAP server:** A checkbox that is checked.
- Buttons:** "Save" and "Cancel" buttons at the bottom.

Snap result feedback: input modal

FIXED ISSUES:

- Atlas2 Plus: fixed automatic time synchronization issues.
- Improved the reliability of the Topology port data.
- Fixed an issue with saving the Topology custom view.
- Restricted non-admin users from making changes to certain settings.
- Fixed an issue with the PROFIBUS audit file download.
- Fixed the bug that makes Atlas reboot, the backend offline, and then it starts the measurement.
- Fixed an issue that makes Atlas1 Firmware update fail.
- Fixed an issue where the Alarm Center did not show any notification.
- Fixed a bug in the Q Factor: with a 100% port load the Q factor doesn't turn red.
- Fixed an issue when the PROFIBUS report could not be generated.
- Fixed an issue where the spinner in the Osiris ComBricks page would spin forever.
- Fixed an issue which caused a long delay when creating the first device group.
- Fixed an issue with a scrollbar in Security Center.
- Fixed an issue where DLR details were not shown in the UI.
- Fixed an issue where network compare would generate false warnings.
- Fixed an issue where csv files would sometimes be downloaded multiple times.
- Fixed an issue where the port load was displayed incorrectly.
- Fixed an issue where ProfiCore does not connect to Osiris.
- Fixed an issue with the device icon change functionality.
- Fixed several issues with the topology after a restart measurement.
- Fixed an issue with the ASI gateway I&m0 data handling.
- Fixed an issue where the office port becomes unreachable.
- Fixed an issue which made retrieving the list of combricks in the network very slow .
- Fixed an issue with very long device names.
- Fixed an issue where the tap data was not cleared after a measurement restart.
- Fixed several issues when loading a measurement file.
- Fixed an issue with the clear data functionality on PROFIBUS.
- Fixed an issue where HelmHolz devices were not shown correctly in Osiris.